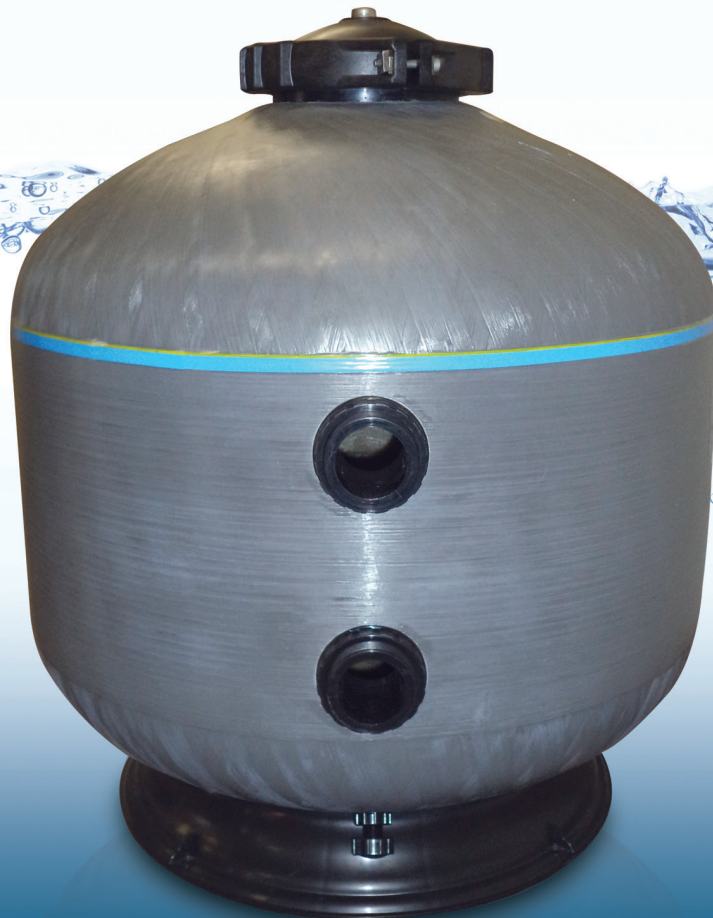


# HRV SERIES

## SIDE MOUNT MEDIA FILTERS

Waterco fiberglass filters embody the latest in fiberglass winding technology. The filters are constructed from anti-corrosive, nontoxic materials and are engineered to withstand the high flow and pressures of today's demanding installations. With the reinforced neck ring and solid lid closure this filter is the best for today's most demanding projects. Maximum operating pressure: 50PSI

- **Internal Bulkhead Wall reinforced for superior structural integrity**
- **Positive 8" clamping design for larger internal access**
- **2" Bulkhead Connections**
- **Fishtail Laterals for improved backwashing hydraulic efficiency- Saves up to 30% waste water**
- **Industry Leading 10 Year Tank Warranty**
- **NSF 50 Approved**

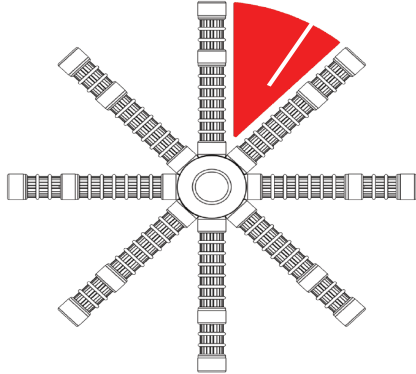


Certified to  
NSF/ANSI Standard 50

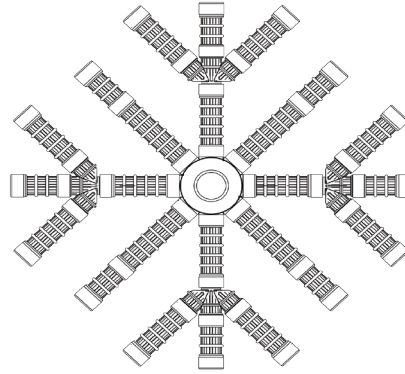


## BEST IN CLASS - FEATURING OUR FISHTAIL LATERAL SYSTEM

### Dead Space Between Laterals



### Dead Space Virtually Eliminated



- Better Coverage Eliminates Dead Space
- Engineered to Improve Backwash Efficiency
- Reduces Filtration pressure loss
- In combination with Waterco's Glass Pearls saves up to 30% of backwash water

#### HRV SIDE MOUNT SAND FILTER

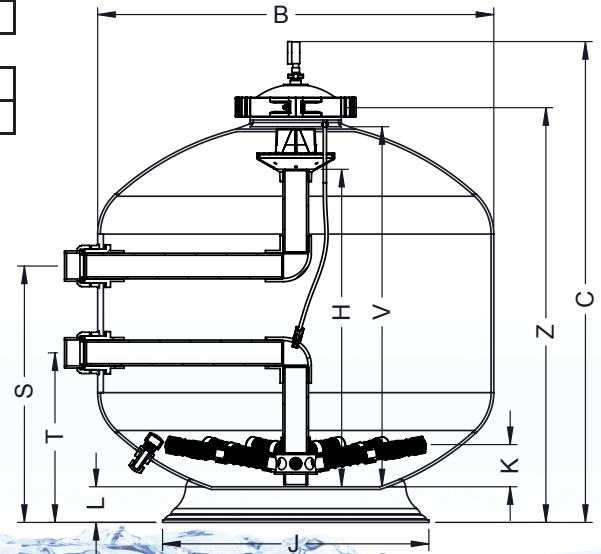
PART NUMBER	PRODUCT DESCRIPTION	NSF
22207188	HRV 18" 2" BH CONN. 58PSI	✓
22207248	HRV 24" 2" BH CONN. 58PSI	✓
22207308	HRV 30" 2" BH CONN. 58PSI	✓
22207368	HRV 36" 2" BH CONN. 58PSI	✓

#### VALVES

PART NUMBER	PRODUCT DESCRIPTION
2290590	MPV & PIPING KIT 2"CONN. W/ SWEEP ELBOW

#### DIMENSIONS

Model	B	C	H	J	K	L	S	T	V	Z
	(in.)	(in.)	(in.)	(in.)	(in.)	(in.)	(in.)	(in.)	(in.)	(in.)
HRV18	18.6	34.0	19.2	14.7	2.3	2.7	18.8	10.8	24.2	28.7
HRV24	24.6	36.4	20.8	19.0	4.2	2.5	19.6	11.6	26.8	31.1
HRV30	31.1	38.9	22.0	24.6	5.9	1.9	20.3	12.3	29.9	33.6
HRV36	36.5	44.1	26.6	24.6	5.0	2.5	23.6	15.6	36.3	38.8



#### SPECIFICATIONS

Model	Valve Size	Bed Depth	Inner Dia.	Filter Area	Max Flow	Max Pool Size	Backwash Flo wRate	Media Volume	Glass Pearl 0.6-0.8	Sand 16/30
	(in.)	(in.)	(in.)	(ft²)	(gpm)	(gal.)	(gpm)	(gal.)	(lb.)	(lb.)
HRV18	2	10	18	2.2	43	15,480	21-43	13.5	200	180
HRV24	2	11	24	3.1	63	22,680	32-63	22.4	330	300
HRV30	2	12	30	4.9	98	35,280	49-98	37.4	550	500
HRV36	2	13	36	7.1	142	51,120	70-140	59.9	880	800

Waterco.us 1.800.247.7291

MultiCyclone > Filters > Pumps > Lights > Media > White Goods > Valves