

Waterco Limited

Established in 1981, Waterco is a worldwide manufacturer and distributor of residential & commercial swimming pool equipment. Our capabilities extend to chemical protection water filters, softeners and purifiers, along with commercial and industrial water treatment equipment.

Waterco's research and development team has created an innovative range of award-winning products. The company's advanced fiberglass winding and pioneering plastic moulding techniques have delivered premium quality products to over 40 countries via its branches operating in Australia, New Zealand, Malaysia, China, the United Kingdom, United States of America, Canada, Indonesia and Singapore.

OFFICES-NORTH AMERICA

**Waterco (USA) Inc**  
Augusta, Georgia, USA  
Tel: +1 706 793 7291

**Waterco Canada**  
Longueuil, Qc, Canada  
Tel: +1 450 748 1421

OFFICES - OVERSEAS

**NSW - Sydney (Head Office)**  
Tel: +61 2 9898 8600

**Waterco (Europe) Limited**  
Sittingbourne, Kent, UK  
Tel: +44 (0) 1795 521 733

**Waterco (NZ) Limited**  
Auckland, New Zealand  
Tel: +64 9 525 7570

**Waterco (C) Limited**  
Guangzhou, China  
Tel: +86 20 3222 2180

**PT Waterco Indonesia**  
Jakarta, Indonesia  
Tel: +62 21 4585 1481

**Waterco Singapore Intl Pte Ltd**  
Nehsons Building, Singapore  
Tel: +65 6344 2378

**Waterco (Far East) Sdn Bhd**  
Selangor, Malaysia  
Tel: +60 3 6145 6000

Distributed by:



In the interest of providing better quality and value we are constantly improving and updating our products. Consequently, pictures and information on our brochures may sometimes vary slightly from models available.

# MICRON

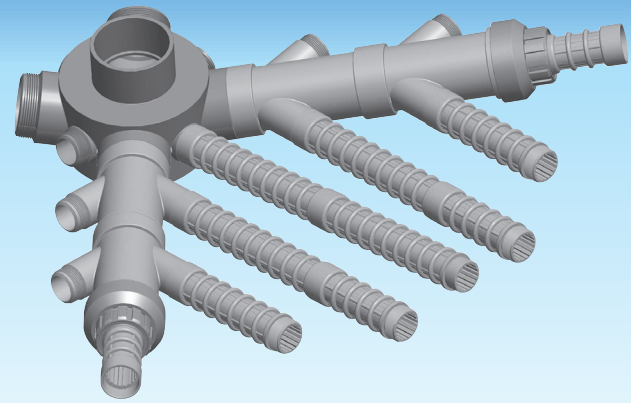
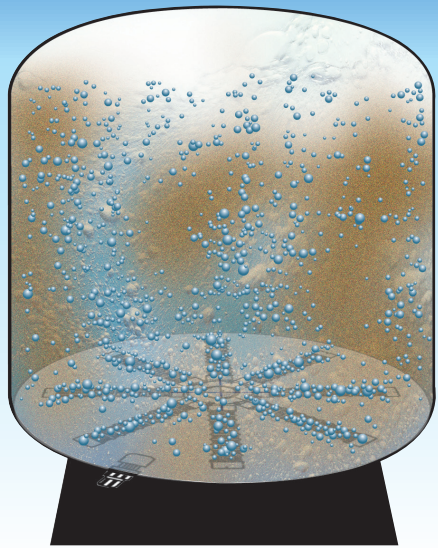
## SIDE MOUNT (SM) COMMERCIAL FIBREGLASS FILTERS

Proven Strength and Durability

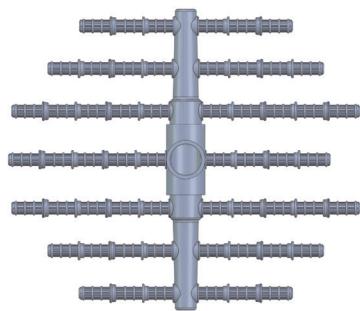
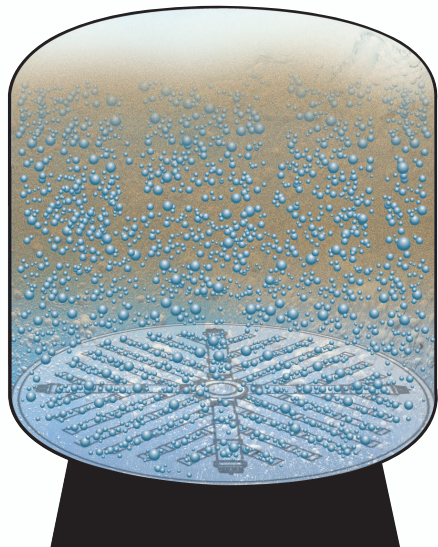


Setting new global benchmarks in durability, versatility, reliability and longevity, Waterco's Micron fiberglass filters are the preferred choice for commercial and industrial operations that demand superior water quality.

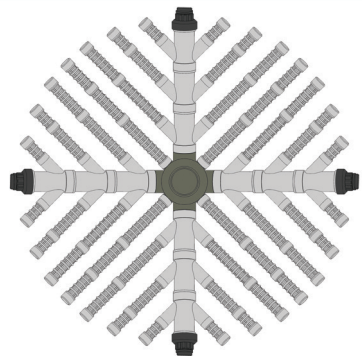




**Hydraulically balanced laterals**  
Micron vertical commercial filters are equipped with “Fish tail” hydraulically balanced laterals, to improve its filtration and backwashing hydraulic efficiency.



**Commercial vertical filter SM36 3” Connections**



**Commercial vertical filters SM42-SM48 3” connections**

Conventional laterals are not suitable for large-scale commercial filters as “dead legs” exist between the laterals, which compromises water flow through the filter bed. Waterco’s unique “fish tail” lateral configuration eliminates this problem by providing effective coverage of the filter bed and balanced water flow.

Micron Commercial Fiberglass Filter Specifications

Sidemount Sand Filters

Proven Strength and Durability



Specifications

Filter Model	Port Size	Bed Depth	Filter Area	Tank Diameter	Overall Height	Filtration Flow Rates		Backwash Flow Rates		Media Volume	Sand 16/30	Glass 0.6-0.8
	inches	inches	Feet	inches	inches	5 GPM/ ft²	10GPM/ ft²	15 GPM/ ft²	20 GPM/ ft²	Cubic Ft	lb	lb
						Flux Rate		Flux Rate				
SM36 - 3"	3.0	15.00	7.05	36	42	35.3	70.5	105.8	141.0	10.42	950	1051
SM42 - 3"	3.0	18.50	9.83	42	49	49.2	98.3	147.5	196.6	16.20	1477	1634
SM48 - 3"	3.0	19.69	13.40	48	58	67.0	134.0	201.0	268.0	27.09	2469	2731

Easy Twist lock lid with removable handles

